

ANNA UNIVERSITY



# INTERNATIONAL HOSTELS

FLORA | LAVENDAR | TULIP

---



# Warden's Message

At the International hostels of Anna University, we commit ourselves to provide the students a neat and clean environment and a comfortable place to live in.

We understand, hostel life is a union of diverse cultures and different upbringings, which blends into a harmony for a rich and memorable experience. We provide atmosphere where they can learn, share and live to the fullest. We promote green sustainability inside the hostel premises.

International hostels infrastructure is fastened with amenities like 24 hour power supply, cold and hot water availability, Wi-Fi connectivity, clean and hygienic environment, spacious and comfortable rooms, air conditioning cooling system, clean toilets, periodic disinfection of building, mess with dedicated staff, nutritious menu with variety, laundry support, 24 hours medical facility and many more things inside hostel campus and 24-hour security and mini gym.

It also becomes the highest obligation & responsibility of all residents that they must keep the International hostel free from Polythene, Alcohol, Smoke etc. to ensure pollution free environment and refrain themselves to be part of any unlawful act including ragging to avoid any severe disciplinary action from the University.

My warm wishes for your outstanding academic careers.

Greetings,

**Dr. L. Suganthi**

# INTERNATIONAL HOSTELS

## ANNA UNIVERSITY

International Hostels for Non-Resident Indian (NRI) / Children of Indian Workers in Gulf Countries (CIWGC) / Foreign National (FN) / Least Developing Countries (LDC) / Small Island Developing States (SIDC) and Indian Council for Cultural Relations (ICCR)

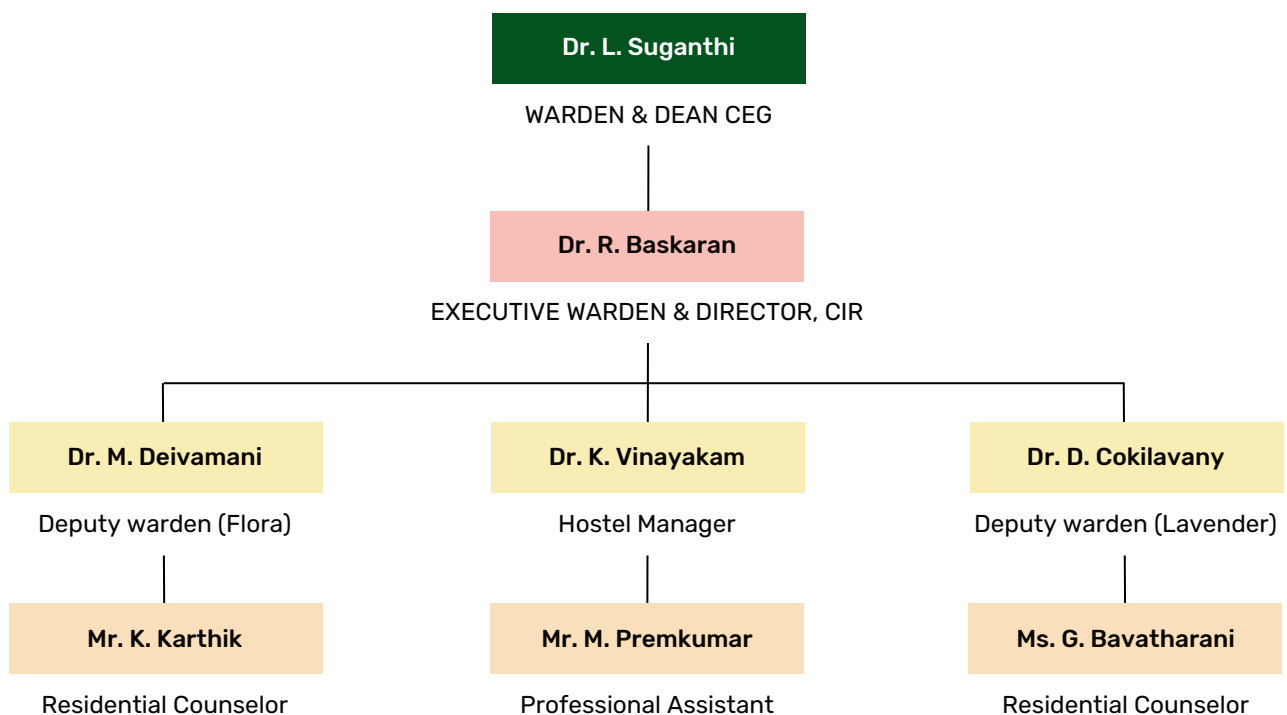
### International Hostel Room details for August 2023

Sl. No.	Buildings	No. of Rooms	Occupied Rooms	Vacancy Rooms	No. of Students Staying
1	Flora Boys Hostel (A Block)	90	35	55	64
2	Flora Boys Hostel (B Block)	54	23	31	26
3	Lavender Girls Hostel	72	26	46	44
4	Tulip Guest Buildings (Research scholar)	72	35	37	57

### International Hostels Last Seven years staying details

Sl.no	Academic year	Boys' Hostel		Girls' Hostel		Total
		Capacity to stay	Actual Strength	Capacity to stay	Actual Strength	
1	2016 - 2017	144	121	144	115	236
2	2017 - 2018	144	135	144	116	251
3	2018 - 2019	144	166	144	122	288
4	2019 - 2020	268	191	144	129	320
5	2020 - 2021	268	42	144	30	72
6	2021 - 2022	268	132	144	90	222
7	2022 - 2023	268	98	144	59	157

# INTERNATIONAL HOSTELS ADMINISTRATION



# FLORA BOYS HOSTEL

## INTERNATIONAL HOSTELS

An International Hostel for Boys (Flora) was established on 12th April 2017. There are 134 rooms which can accommodate 268 students in Flora with attached wash rooms with water heater. Each and every room has an AC, Mini Fridge, Microwave Oven and 2 cots with mattress, 2 tables, 2 chairs, one bed side table, 2 cupboards.

### Facilities Available

- Library Hall
- Mini Gym Hall with Indoor Games
- Washing machine Room
- Shuttle cock court
- Television Room
- Cycle Stand
- Lift Facilities
- Executive Guest Room 10nos with TV& WIFI connection
- Cloth Drying Hall
- Green Garden Frontage
- RO Drinking water

### Services Provided

- 24/7 Security Services
- 24/7 Water supply
- 24/7 Health Centre Ambulance facilities
- 24/7 WIFI Connection
- Housekeeping facility (09.30 am to 06.30 pm)



# LAVENDER – GIRLS HOSTEL

## INTERNATIONAL HOSTELS

An International Hostel for Girls (Lavender) was established on 12th October 2011. There are 72 rooms which can accommodate 144 students in Lavender with attached wash rooms with water heater. Each and every room has an AC, Mini Fridge, Microwave Oven and 2 cots with mattress, 2 tables, 2 chairs, one bed side table, 2 cupboards.

### Facilities Available

- Library Hall
- Mini Gym Hall with Indoor Games
- Washing machine Room
- Shuttle cock court
- Television Room
- Cycle Stand
- Lift Facilities
- Executive Guest Room 10nos with TV& WIFI connection
- Cloth Drying Hall
- Green Garden Frontage
- Napkin vending machine & destroyer machine
- RO Drinking water

### Services Provided

- 24/7 Security Services
- 24/7 Water supply
- 24/7 Health Centre Ambulance facilities
- 24/7 WIFI Connection
- Housekeeping facility (09.30 am to 06.30 pm)



# TULIP – GUEST BUILDING

## INTERNATIONAL HOSTELS

A guest building for visitors is exclusively built on par with international standard. This building was established on 27th July 2011. There are 72 rooms which can accommodate 144 guests in Tulip with attached wash rooms with water heater. Each and every has an AC, Mini Fridge, Microwave Oven and 2 cots with mattress, 2 tables, 2 chairs, one bed side table, 2 cupboards.

### Facilities Available

- Washing machine Room
- Lift Facilities
- Green Garden Frontage
- RO Drinking water

### Services Provided

- 24/7 Security Services
- 24/7 Water supply
- 24/7 Health Centre Ambulance facilities
- 24/7 WIFI Connection
- Housekeeping facility (09.30 am to 06.30 pm)



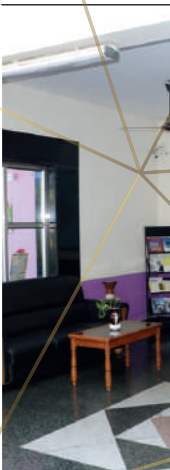
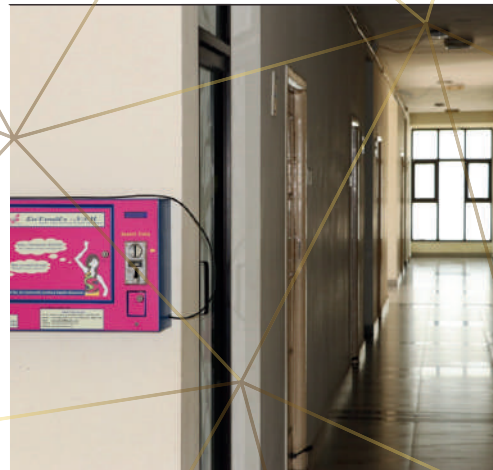


# *A Glimpse of*



**F L O R A**  
INTERNATIONAL HOSTELS

# A Glimpse of



LAVENDER  
INTERNATIONAL HOSTELS



# Dinning Complex



# Gourmet Basket Restaurant



“

*An ideation aint  
work without  
execution*

## Contact Us

International Hostel Office  
Anna University, Chennai - 25.



044-2235 9826 / 9827